

bailliegallery

contemporary art

1a Copper Row
Tower Bridge Piazza
Shad Thames
London SE1 2LH

PRESS RELEASE – February 2005

From: Victoria Baillie, Baillie Gallery, 07711 255613 or victoria@bailliegallery.com

Where: 1A Copper Row, Tower Bridge Piazza, Shad Thames, London SE1 2LH

When: 24 February to 20 March 2005; Wed – Sun 12-6pm, other times by appointment

Nearest tubes: London Bridge and Tower Hill

RISING TO NEW HEIGHTS : UP AND COMING PAINTING GALLERY RELAUNCHES IN SHAD THAMES, SE1

Baillie Gallery announces that it has moved to new premises in Shad Thames, SE1. Relaunching in a new gallery space in the vibrant Tower Bridge Piazza on the South side of Tower Bridge, Baillie Gallery brings contemporary paintings by some of the UK's most promising young artists and established British contemporary painters to this enclave of contemporary art and design. Shad Thames currently plays host to the sculpture galleries of David Begbie's Gallery Different and McHardy Coombs Sculpture Gallery and the contemporary applied arts of Plateaux Gallery, as well as the celebrated Conran Design Museum.



Mark Johnston, White Land

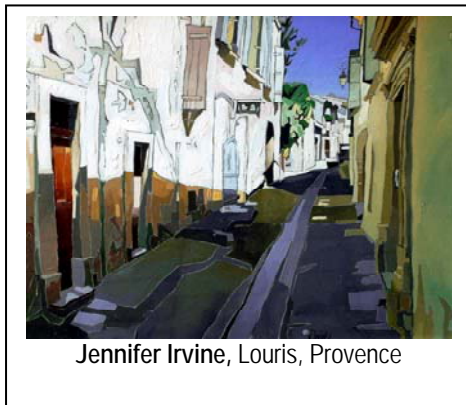
Set up some fifteen months ago by Victoria Baillie, a fine art and law graduate who practised corporate law in the City for several years before deciding to pursue her passion for contemporary painting, Baillie Gallery is already becoming renowned amongst its clients and London collectors for the quality of the art it offers.

The relaunch exhibition at the new gallery space will concentrate on recent works by two artists, Mark Johnston and Jennifer Irvine. Mark studied at Brighton University during the

Contact: Victoria Baillie - 07711 255613 – victoria@bailliegallery.com

1990s, winning the Sussex Painting Prize shortly after graduating. Jennifer studied at the Glasgow School of Art and was taught by Leon Morocco, James Robertson and Barbara Rae to cultivate her wondrous ability with the use of colour. Having viewed Mark's work previously in an exhibition in London, Victoria was captivated by the freshness and power expressed in Mark's abstract landscapes as well as by his superb handling of a neutral tonal palette primarily composed of subtle tones of white, blue and ochre. Victoria felt that a selection of his paintings ranging from large dramatic pieces to smaller intimate canvases would sit beautifully alongside Jennifer Irvine's Scottish Colourist- influenced scenes of continental village life. Jennifer's paintings are often richly textured and her work has been described as "a profusion of patterns which pulse with life". A small collection of pieces by Emma S. Davis RSW will also be on show during this exhibition. Collectors have been falling in love with Emma's semi-abstract landscapes, painted in a palette of rich pinks, indigos and blues, ever since she graduated from the Glasgow School of Art with a sell-out degree show in 1998.

The exhibition opens on the 24th February and runs until the 20th of March 2005.



For more information, contact

Victoria Baillie
Baillie Gallery
1a Copper Row
Tower Bridge Piazza
Shad Thames
London SE1 2LH
Tel: 07711 255613
Email: victoria@bailliegallery.com
Web: www.bailliegallery.com